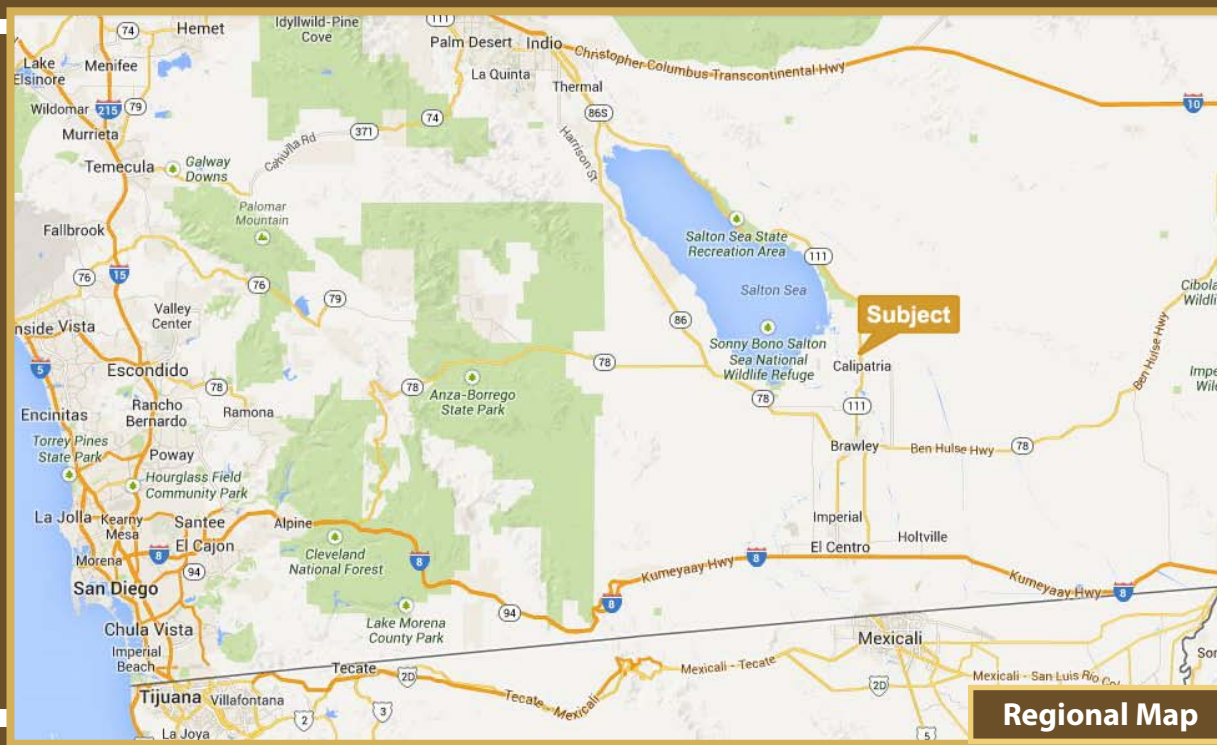


Land for Sale

HWY 111 Frontage, County of Imperial, CA

Street View

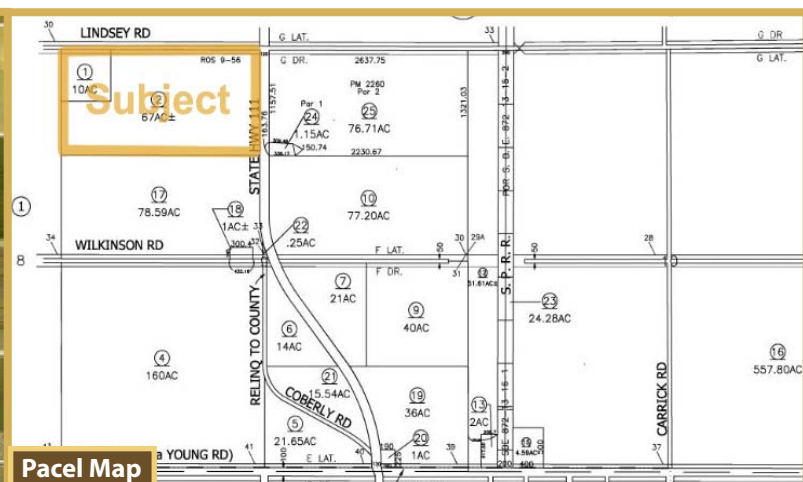


Property Details:

- APN #023-020-001/002
- 76.25 Acres Total
- Current Use: Agriculture
*Buyer to verify zoning and that it will allow buyer's intended use
- Agriculture Water Available
- HWY 111 Frontage

Location:

- Lindsey Rd & State HWY 111 Area
- Close to Salton Sea
- Close to Cliff Hatfield Memorial Airport
- Approximate 1 mi from City of Calipatria
- Approximate 10 mi from City of Brawley
- Approximate 34 mi from the U.S. - Mexico Border



For more information please contact us!



Chris Wen
BRE No. 01009134
Cell Phone #: (909) 576-6888
E-mail: waltonrealtychris@hotmail.com



Jeffrey Chung
BRE No. 01760416
Cell Phone #: (714) 414-8116
E-mail: jefchung@gmail.com



BRE #: 01053889 Phone #: (626) 854-2888
19057 Colima Rd, Rowland Heights, CA 91748

www.waltonrealtyinc.com

Disclaimers: Information deemed reliable but not guaranteed. Maps are not to scale.